

MONTHLY MEMBERSHIP PROGRESS REPORT

LOCATION INDIA

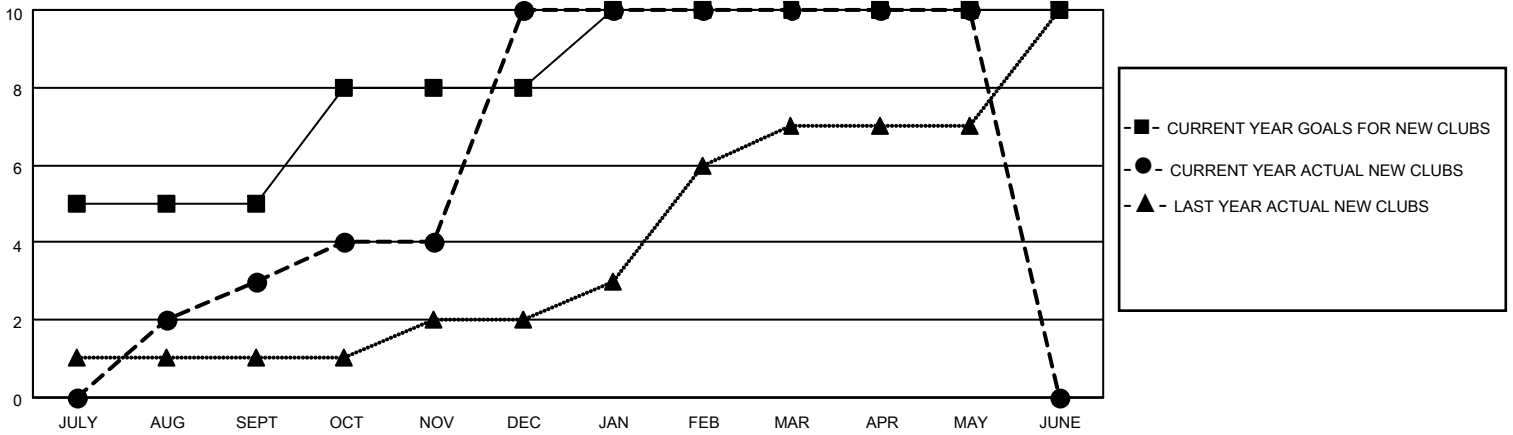
District 322C3

Results as of: 5/31/2021

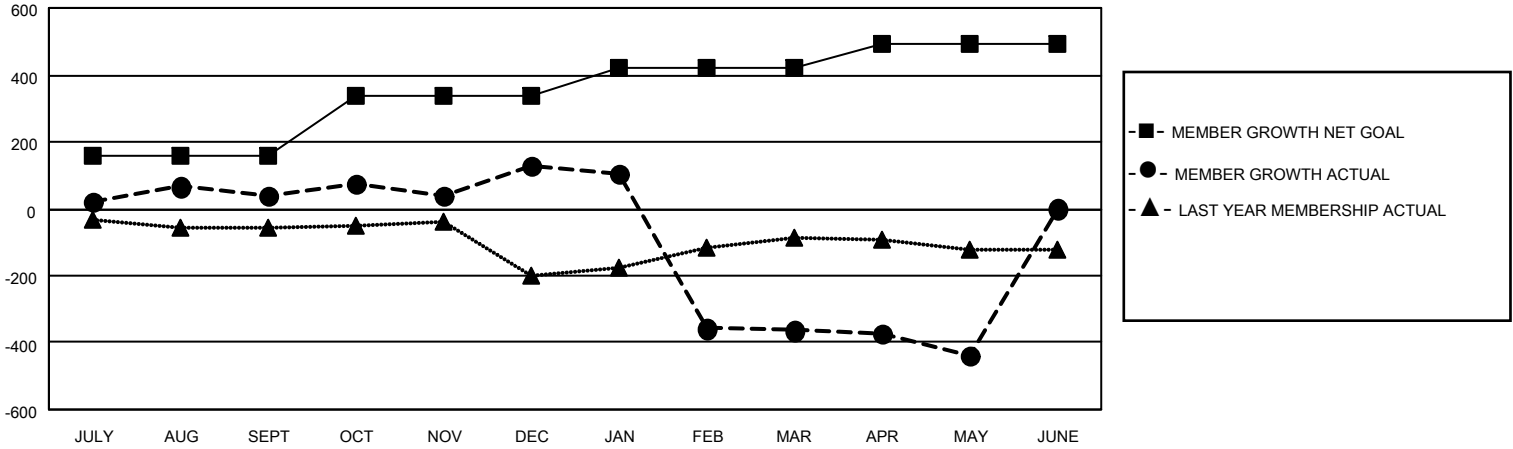
Clubs			
RESULTS FOR 2020-2021			
QUARTER	NEW CLUB GOAL	NEW CLUBS	DROPPED CLUBS
JULY/AUG/SEPT	5	3	0
OCT/NOV/DEC	3	7	0
JAN/FEB/MAR	2	0	23
APR/MAY/JUNE	0	0	0

Members			
RESULTS FOR 2020-2021			
QUARTER	MEMBER GROWTH NET GOAL	MEMBER GROWTH ACTUAL	DROPPED MEMBERS ACTUAL (including transfers)
JULY/AUG/SEPT	160	113	72
OCT/NOV/DEC	180	341	250
JAN/FEB/MAR	80	26	510
APR/MAY/JUNE	70	25	92

GOALS AND ACTUAL NEW CLUBS CUMULATIVE



GOALS AND ACTUAL MEMBERS CUMULATIVE



DROPPED CLUBS: 23

57 CLUBS OF 116 ADDED 1 OR MORE NEW MEMBERS

GENDER DISTRIBUTION

MALE 2,288 (74.36%)
 FEMALE 789 (25.64%)

DROPPED MEMBERS

[CLICK HERE FOR CUMULATIVE MEMBERSHIP DATA](#)

DECEASED	22
CLUB CANCELLED	467
OTHER	435
TOTAL	924

TOTAL FAMILY UNIT MEMBERS	1,986
FAMILY MEMBERS PAYING HALF DUES	1,263